

6007 BYRNE ROAD

BURNABY, BC

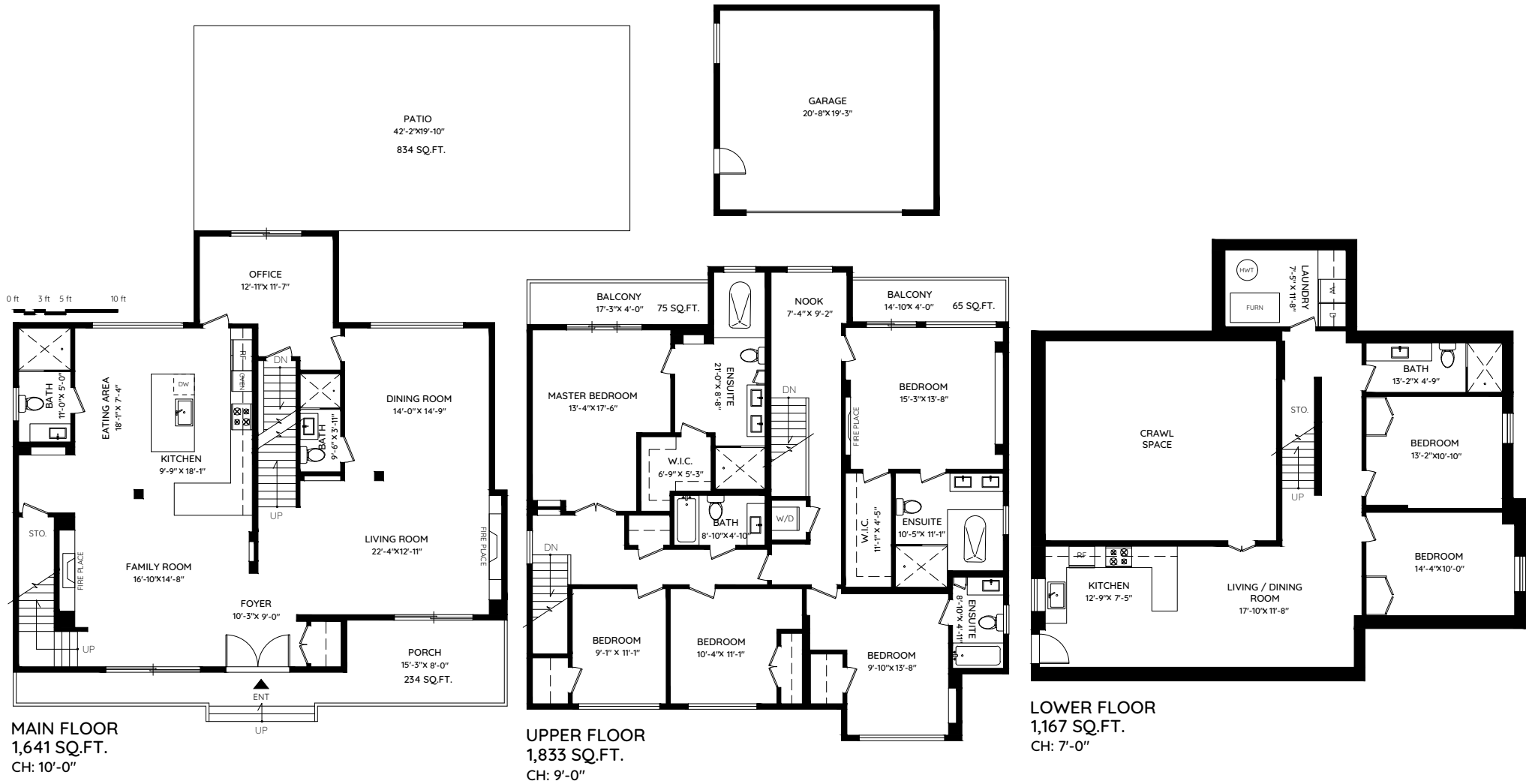
MAIN	1,641 SQ.FT.	GARAGE	444 SQ.FT.
UPPER	1,833 SQ.FT.	PATIO	834 SQ.FT.
LOWER	1,167 SQ.FT.	BALCONY	140 SQ.FT.
TOTAL	4,641 SQ.FT.	PORCH	234 SQ.FT.
	TOTAL	TOTAL	1,652 SQ.FT.



MALCOLM HASMAN
OVER 25 YEARS OF AWARD WINNING SERVICE

温哥华最顶尖的豪华地产经纪

MALCOLMHASMAN.COM



The floor plan and the measurements are approximate and are to be used for advertising usage only. Not suitable for architectural or construction. E&OE. © 2019 KEYPLAN Measuring Inc.