

105 - 1515 HOMER MEWS

VANCOUVER, BC

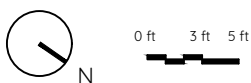
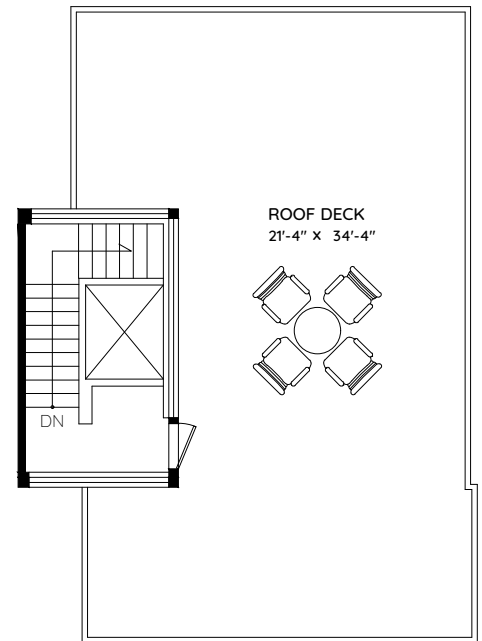
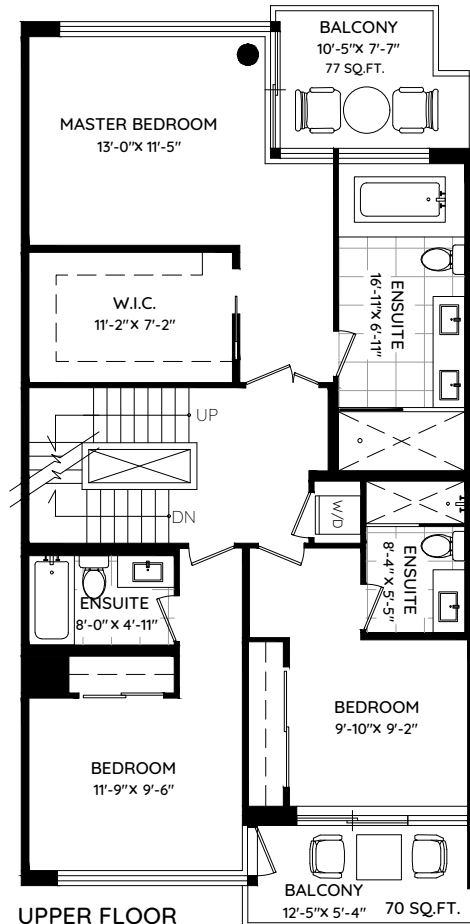
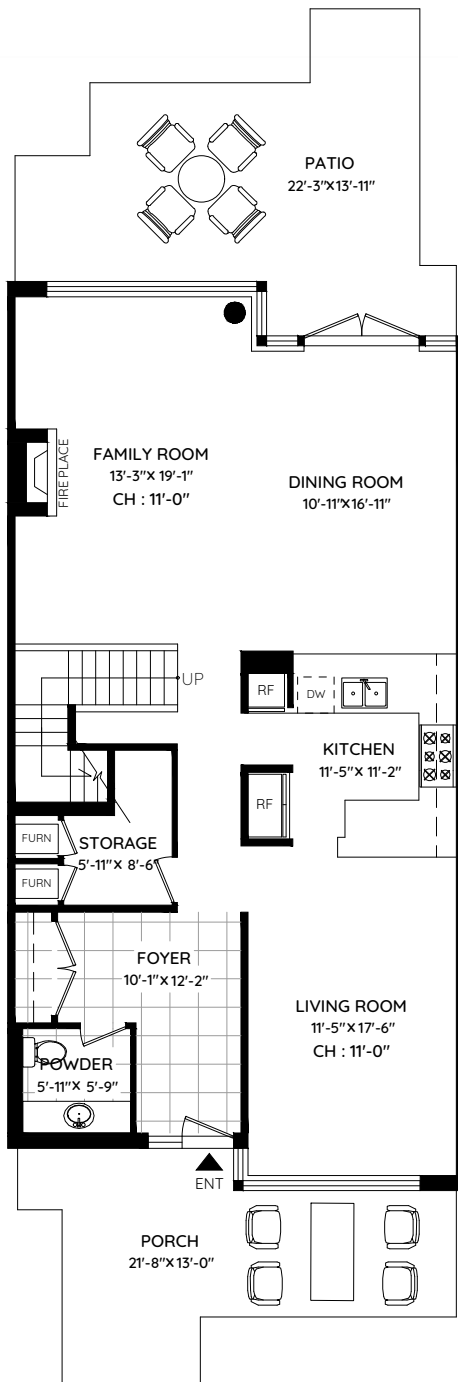


MALCOLM HASMAN
OVER 25 YEARS OF AWARD WINNING SERVICE

温哥华最顶尖的豪华地产经纪

MALCOLMHASMAN.COM

| | |
|--------------|---------------------|
| MAIN | 1,199 SQ.FT. |
| UPPER | 1,068 SQ.FT. |
| TOP | 113 SQ.FT. |
| TOTAL | 2,380 SQ.FT. |
| PATIO | 284 SQ.FT. |
| ROOFDECK | 675 SQ.FT. |
| PORCH | 209 SQ.FT. |
| BALCONY | 147 SQ.FT. |
| TOTAL | 1,315 SQ.FT. |



The floor plan and the measurements are approximate and are to be used for advertising usage only.
Not suitable for architectural or construction. E&O Insured Total sq.ft. is calculated using method ANSI - Z765.