

5417 GREENTREE ROAD

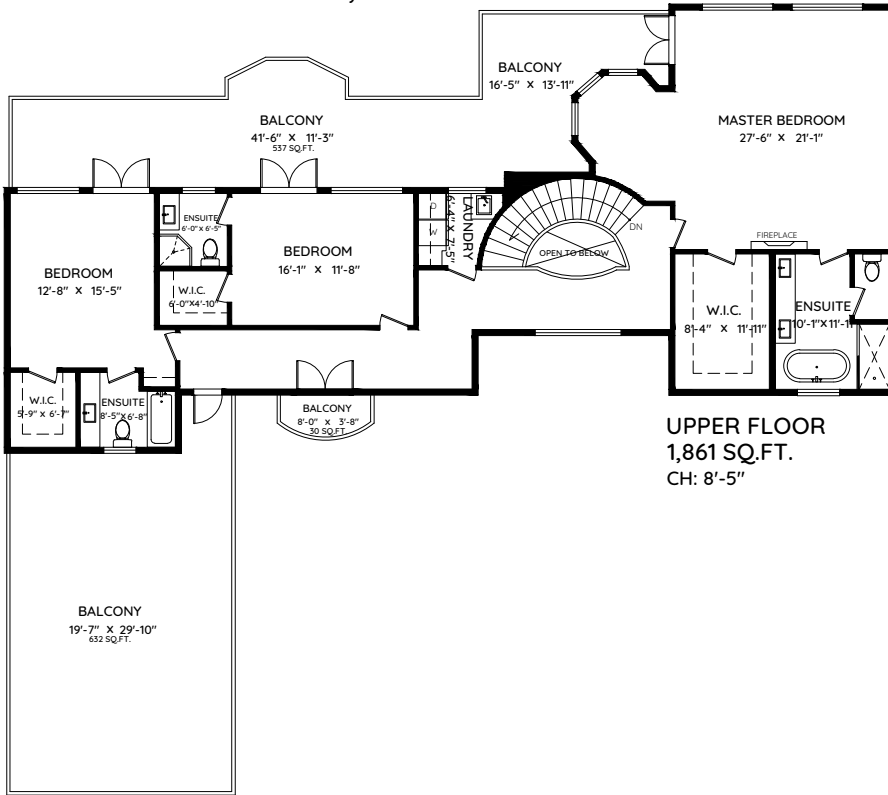
WEST VANCOUVER, BC



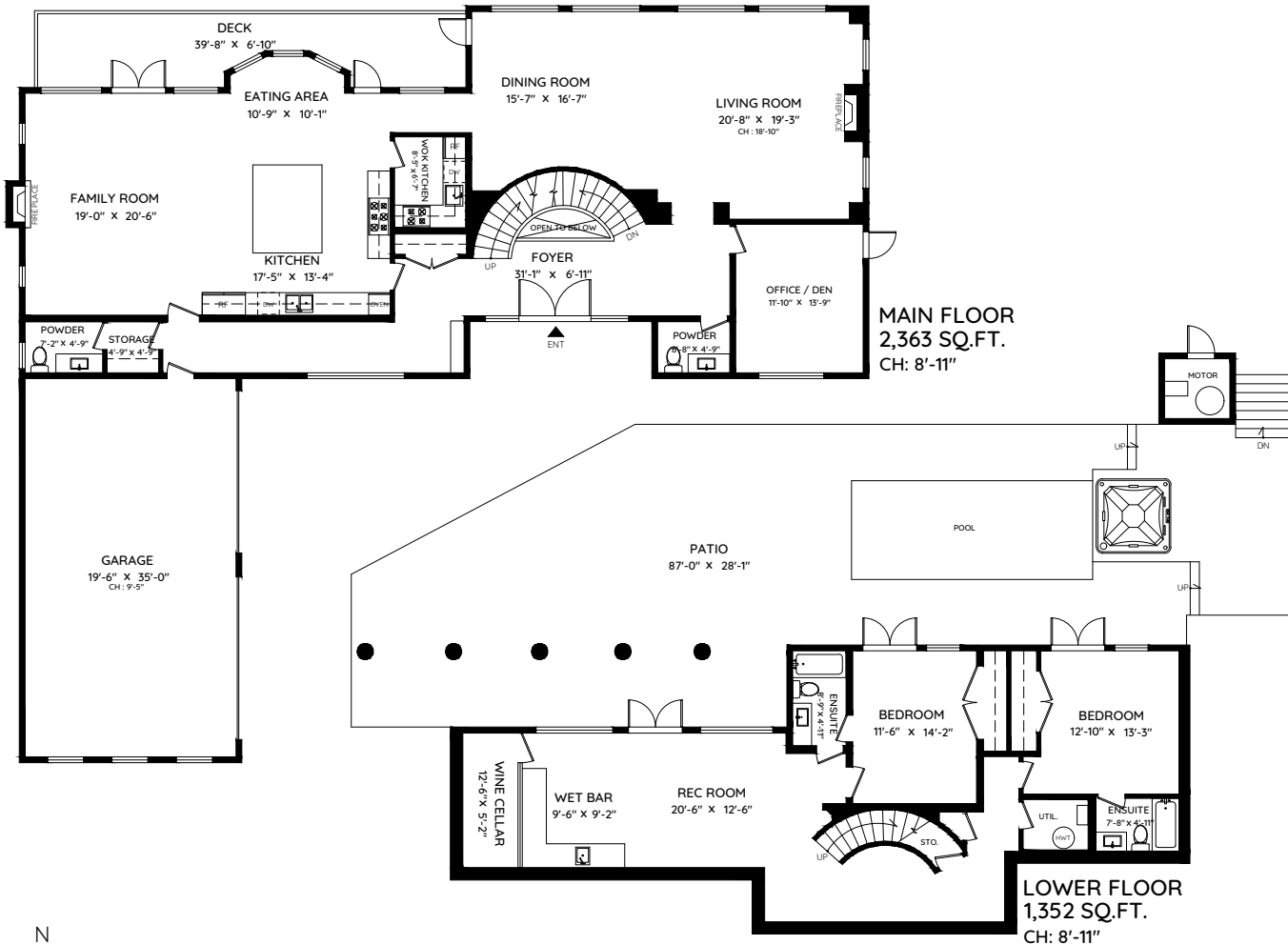
MALCOLM HASMAN
OVER 25 YEARS OF AWARD WINNING SERVICE

温哥华最顶尖的豪华房地产经纪

MALCOLMHASMAN.COM



MAIN	2,363 SQ.FT.
UPPER	1,861 SQ.FT.
LOWER	1,352 SQ.FT.
TOTAL	5,576 SQ.FT.
GARAGE	733 SQ.FT.
BALCONY	1199 SQ.FT.
PATIO	1900 SQ.FT.
DECK	252 SQ.FT.
MOTOR	47 SQ.FT.
TOTAL	4,131 SQ.FT.



0 ft 3 ft 5 ft 10 ft

The floor plan and the measurements are approximate within +/- 2% and are to be used for advertising usage only. Not suitable for architectural or construction, May include unfinished area. Not suitable for architectural or construction. E&O Insured