

1526 CHIPPENDALE COURT

WEST VANCOUVER, BC

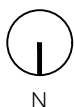
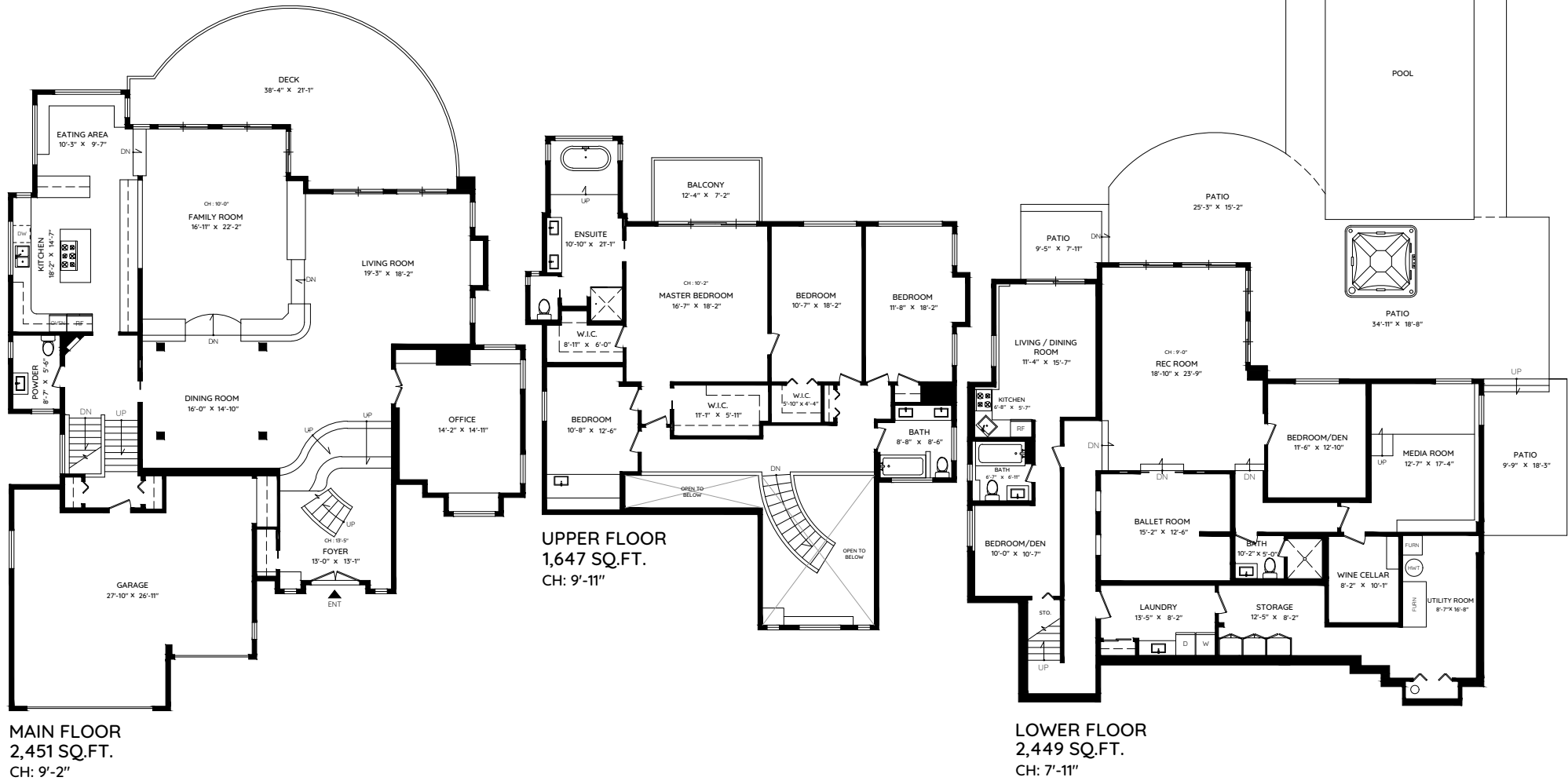


MALCOLM HASMAN
OVER 25 YEARS OF AWARD WINNING SERVICE

温哥华最顶尖的豪华地产经纪

MALCOLMHASMAN.COM

MAIN	2,451 SQ.FT.	GARAGE	683 SQ.FT.
UPPER	1,647 SQ.FT.	BALCONY	96 SQ.FT.
LOWER	2,449 SQ.FT.	PATIO	1199 SQ.FT.
TOTAL	6,547 SQ.FT.	DECK	530 SQ.FT.
		TOTAL	2,508 SQ.FT.



The floor plan and the measurements are approximate within +/- 2% and are to be used for advertising usage only. Not suitable for architectural or construction. May include unfinished area. Not suitable for architectural or construction. E&O Insured

