

901 FARMLEIGH ROAD

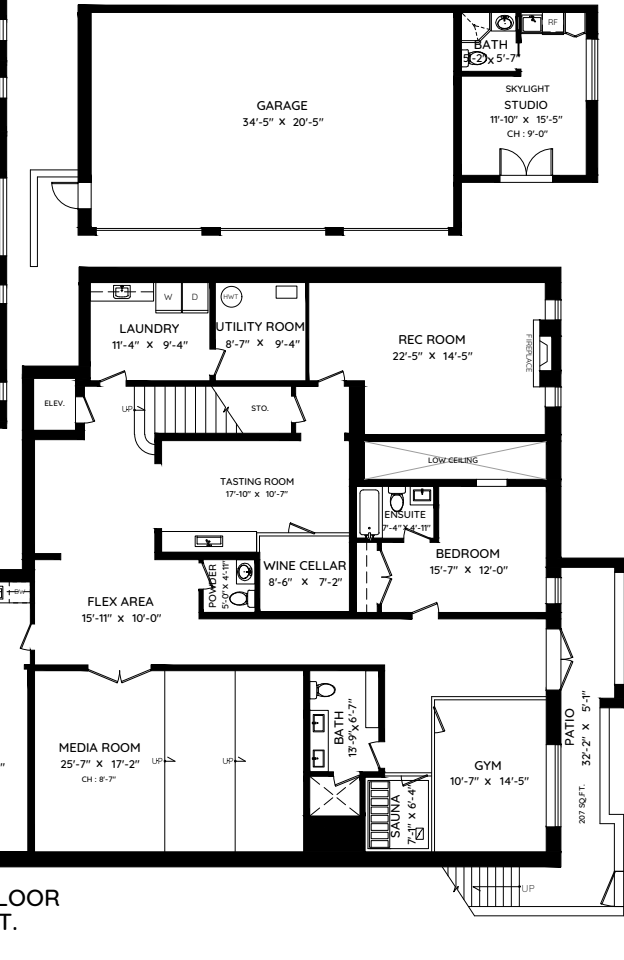
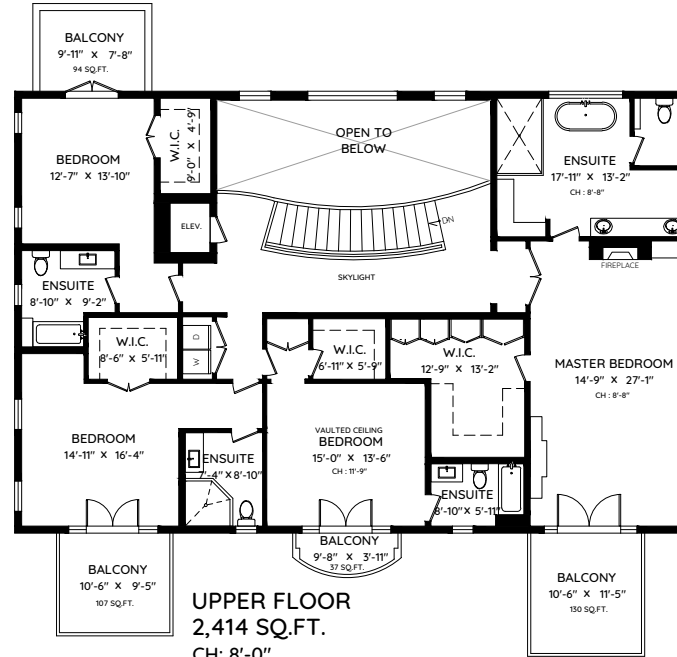
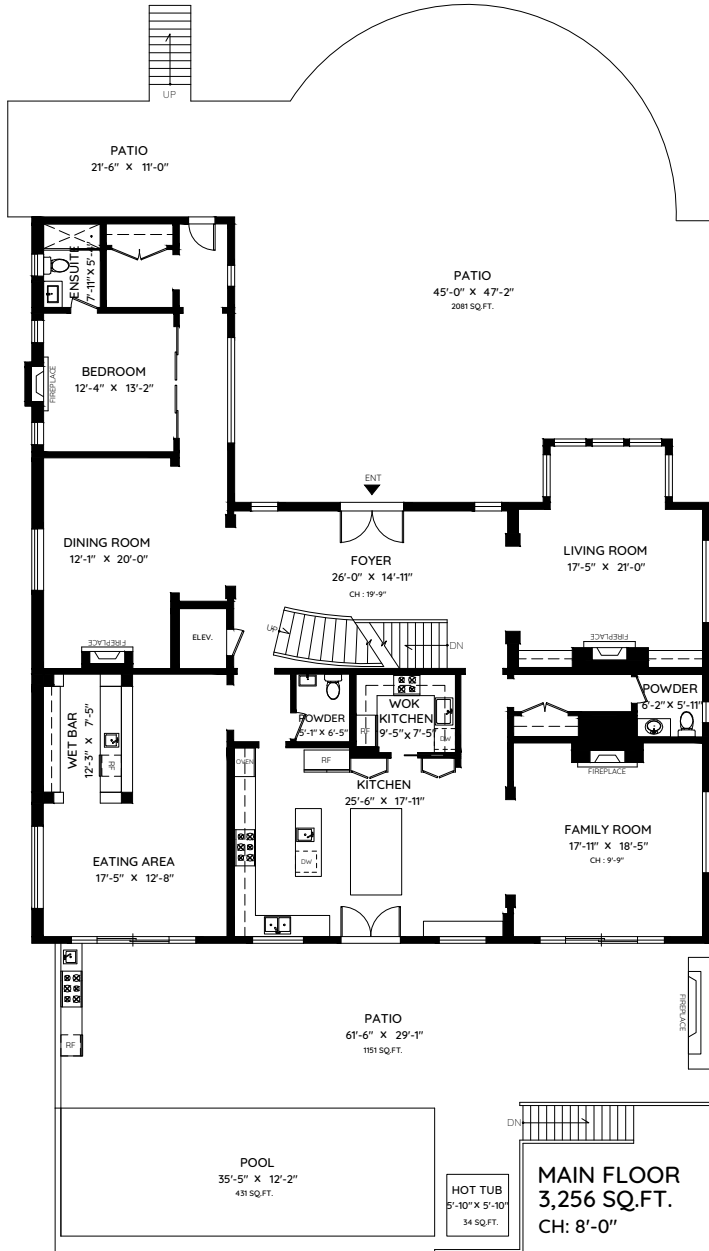
WEST VANCOUVER, BC



MALCOLM HASMAN
OVER 25 YEARS OF AWARD WINNING SERVICE

温哥华最顶尖的豪华地产经纪

MALCOLMHASMAN.COM



| | |
|--------------|---------------------|
| MAIN | 3,256 SQ.FT. |
| UPPER | 2,414 SQ.FT. |
| LOWER | 3,161 SQ.FT. |
| TOTAL | 8,831 SQ.FT. |
| GARAGE | 786 SQ.FT. |
| STUDIO | 225 SQ.FT. |
| BALCONY | 368 SQ.FT. |
| PATIO | 3439 SQ.FT. |
| POOL/HOT TUB | 465 SQ.FT. |
| TOTAL | 5,283 SQ.FT. |



The floor plan and the measurements are approximate within +/- 2% and are to be used for advertising usage only. May include unfinished area. Not suitable for architectural or construction. E&O Insured