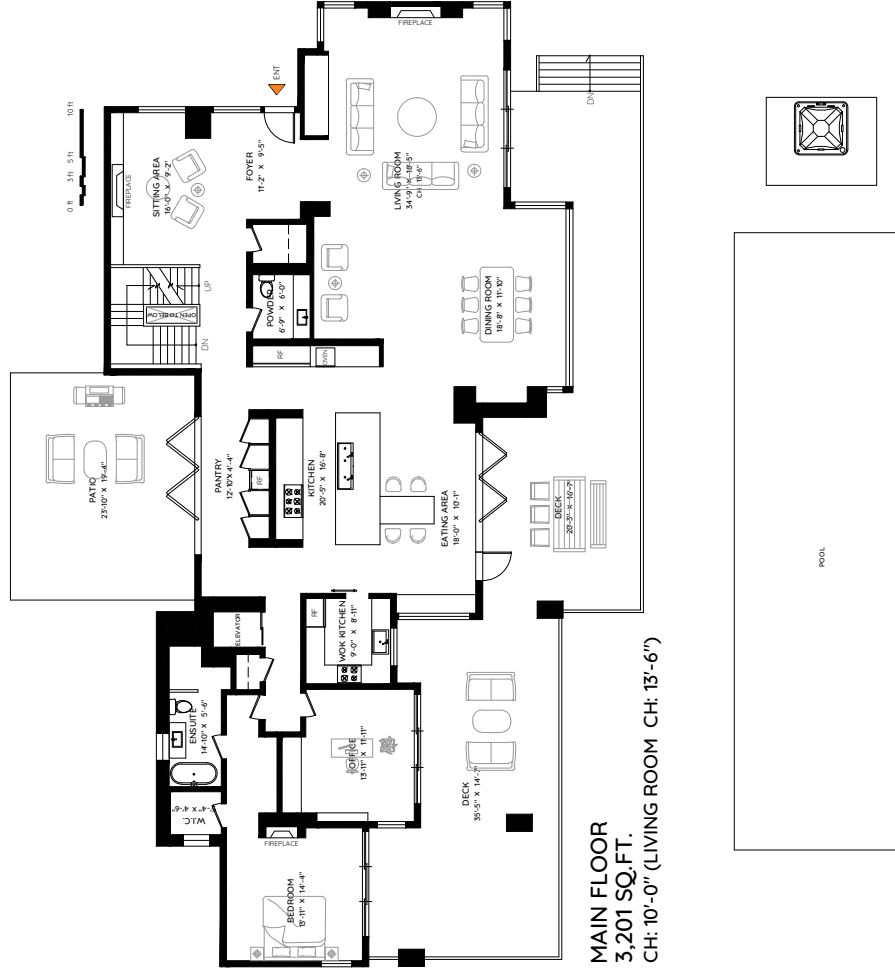
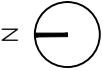
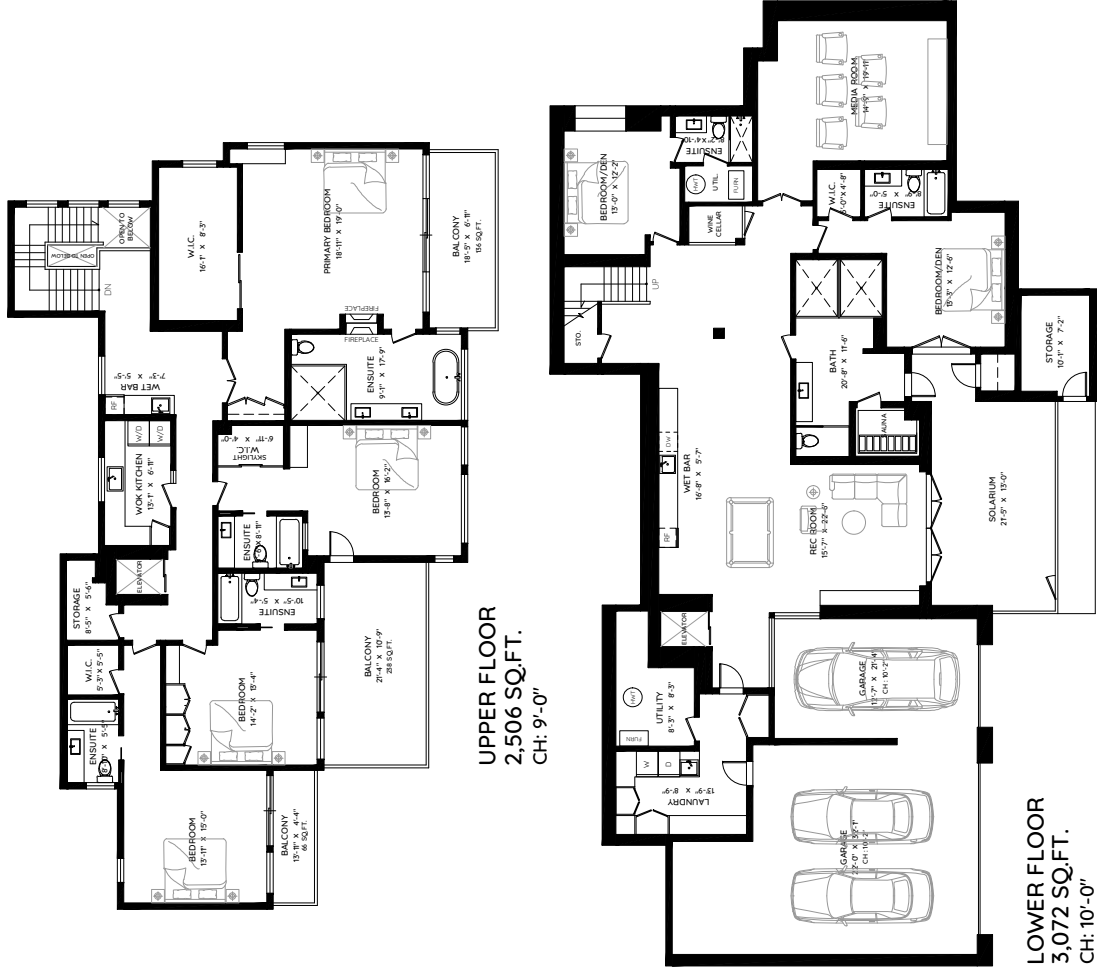


2303 PALMERSTON AVENUE WEST VANCOUVER, BC

MAIN	3,201 SQ.FT.	GARAGE	1,011 SQ.FT.
UPPER	2,506 SQ.FT.	DECK	1,355 SQ.FT.
LOWER	3,072 SQ.FT.	PATIO	458 SQ.FT.
TOTAL	8,779 SQ.FT.	BALCONY	440 SQ.FT.
		STORAGE	95 SQ.FT.
		TOTAL	3,359 SQ.FT.



MALCOLM HASMAN
OVER 25 YEARS OF AWARD WINNING SERVICE
温哥华最顶尖的豪华地产经纪
MALCOLMHASMAN.COM



The floor plan and measurements are approximate, typically within +/- 2%. These are intended strictly for advertising purposes. They may encompass unfinished areas and are not intended for architectural or construction applications. There may be variances in the numbers if there were restrictions on property access or if taking precise measurements at the time of measuring isn't feasible. ESO insured.

