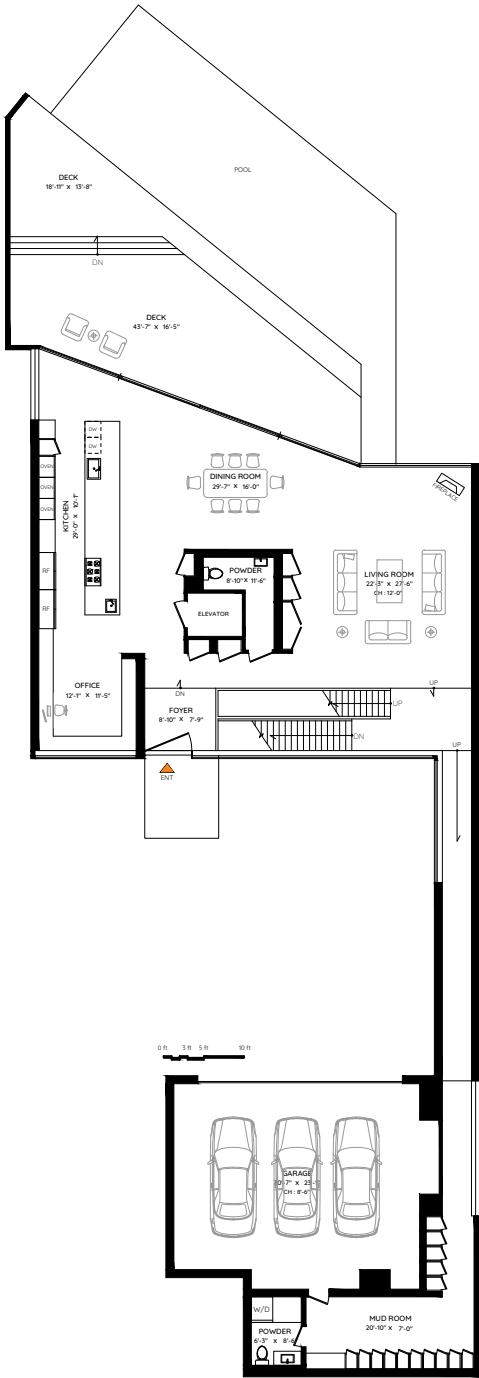
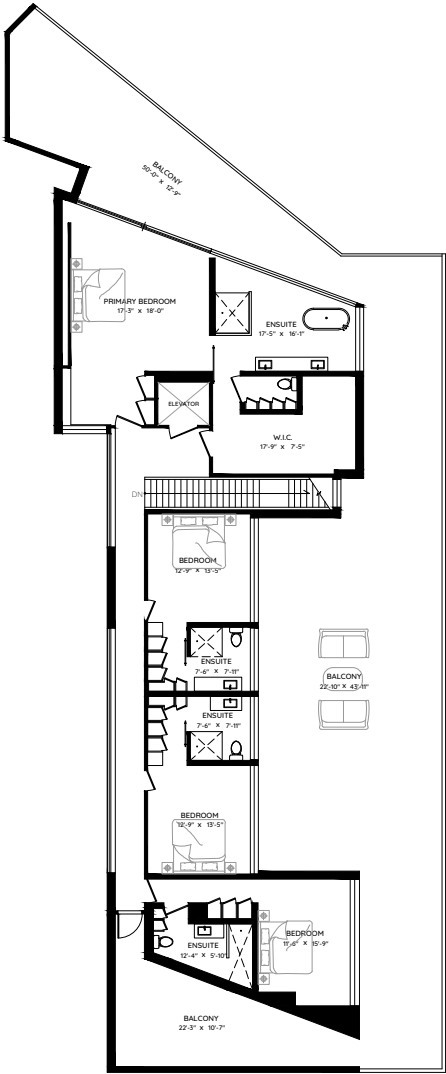


2642 BELLEVUE AVENUE
WEST VANCOUVER, BC

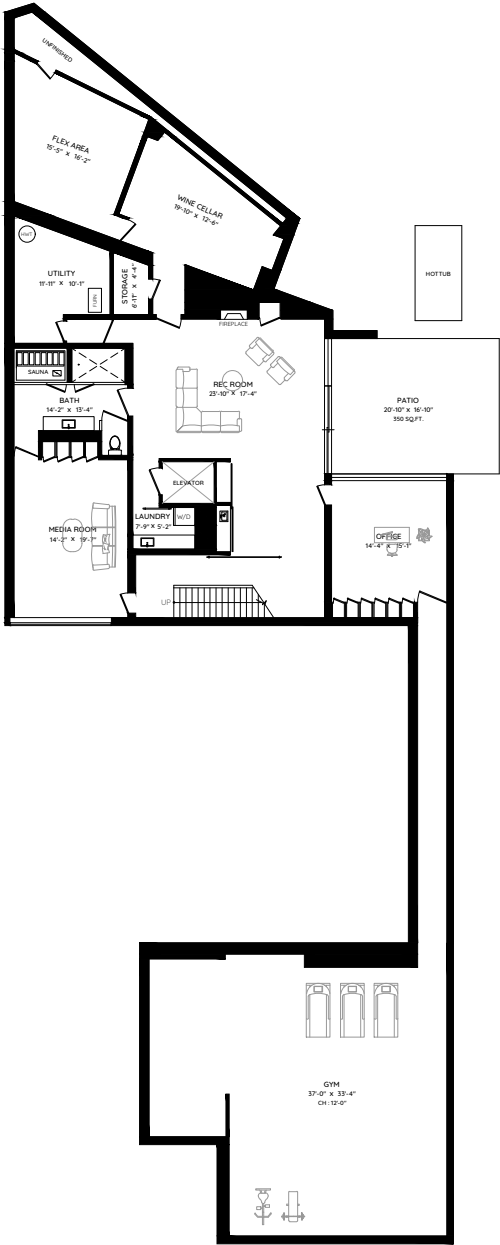
MAIN	3,068 SQ.FT.	GARAGE	846 SQ.FT.
UPPER	2,446 SQ.FT.	DECK	972 SQ.FT.
LOWER	4,270 SQ.FT.	BALCONY	2,550 SQ.FT.
TOTAL	9,784 SQ.FT.	PATIO	1,235 SQ.FT.
UNFINISHED	79 SQ.FT.	TOTAL	5,603 SQ.FT.
TOTAL AREA	9,863 SQ.FT.		



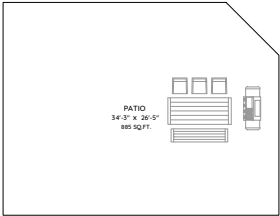
MAIN FLOOR
3,068 SQ.FT.
CH: 9'-0"



UPPER FLOOR
2,446 SQ.FT.
CH: 9'-6"



LOWER FLOOR
4,270 SQ.FT.
CH: 9'-4"





MALCOLM HASMAN

OVER 25 YEARS OF AWARD WINNING SERVICE

温哥华最顶尖的豪华地产经纪

MALCOLMHASMAN.COM



The floor plan and measurements are approximate, typically within +/- 2%. These are intended strictly for advertising purposes. They may encompass unfinished areas and are not intended for architectural or construction applications. There may be variances in the numbers if there were restrictions on property access or if taking precise measurements at the time of measuring isn't feasible. E&O insured.

