

# 707 EYREMOUNT DRIVE - MAIN

## WEST VANCOUVER, BC

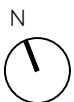
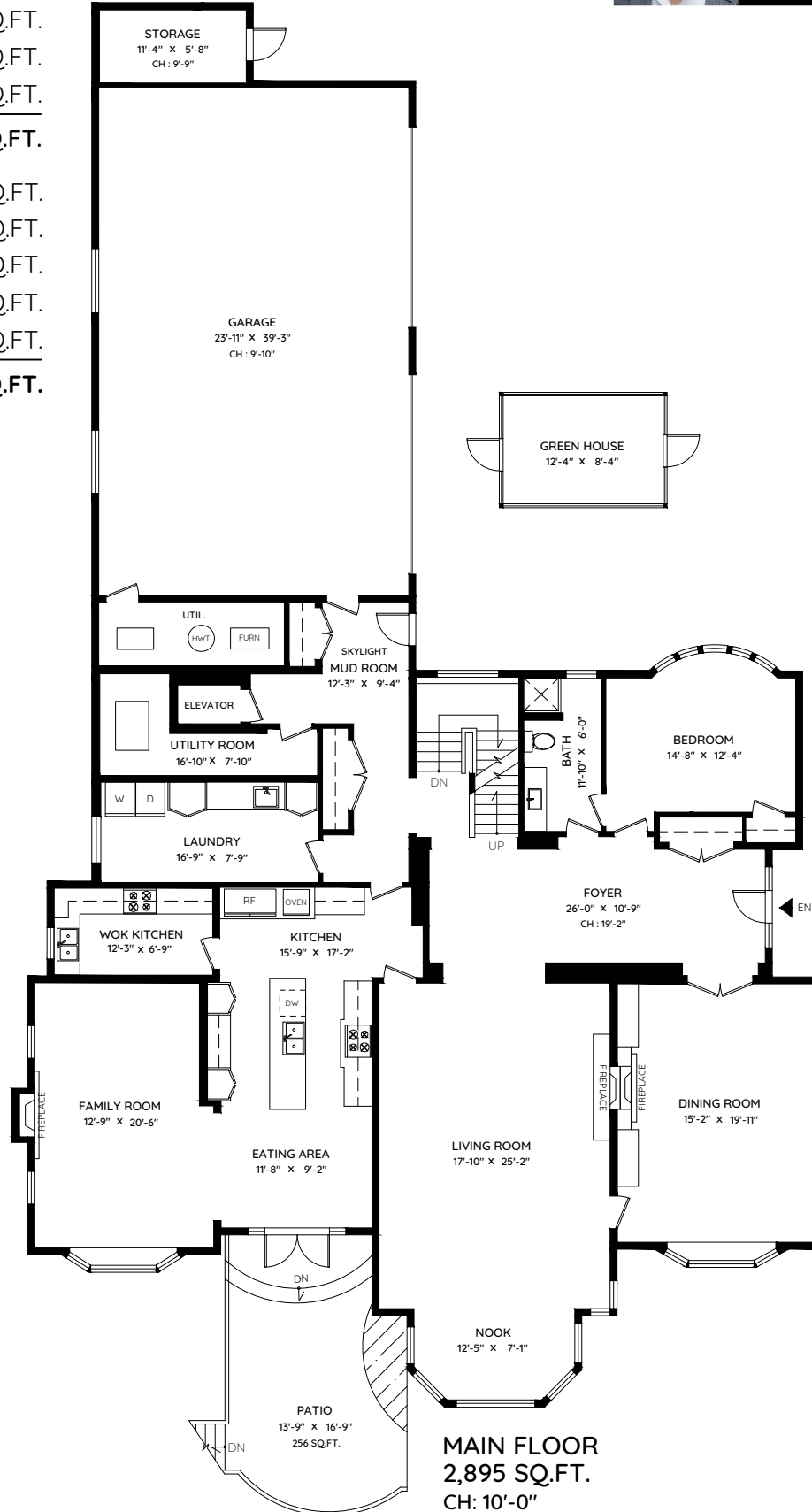


**MALCOLM HASMAN**  
OVER 25 YEARS OF AWARD WINNING SERVICE

温哥华最顶尖的豪华地产经纪

MALCOLMHASMAN.COM

MAIN	2,895 SQ.FT.
UPPER	2,656 SQ.FT.
LOWER	2,901 SQ.FT.
<b>TOTAL</b>	<b>8,452 SQ.FT.</b>
GARAGE	1074 SQ.FT.
GREEN HOUSE	115 SQ.FT.
STORAGE	77 SQ.FT.
BALCONY	254 SQ.FT.
PATIO	406 SQ.FT.
<b>TOTAL</b>	<b>1,926 SQ.FT.</b>



0 ft 3 ft 5 ft 10 ft

The floor plan and the measurements are approximate within +/- 2% and are to be used for advertising usage only. May include unfinished area. Not suitable for architectural or construction. E&O Insured

# 707 EYREMOUNT DRIVE - UPPER

## WEST VANCOUVER, BC



**MALCOLM HASMAN**  
OVER 25 YEARS OF AWARD WINNING SERVICE

温哥华最顶尖的豪华地产经纪

MALCOLMHASMAN.COM

MAIN	2,895 SQ.FT.
UPPER	2,656 SQ.FT.
LOWER	2,901 SQ.FT.

**TOTAL 8,452 SQ.FT.**

GARAGE 1074 SQ.FT.

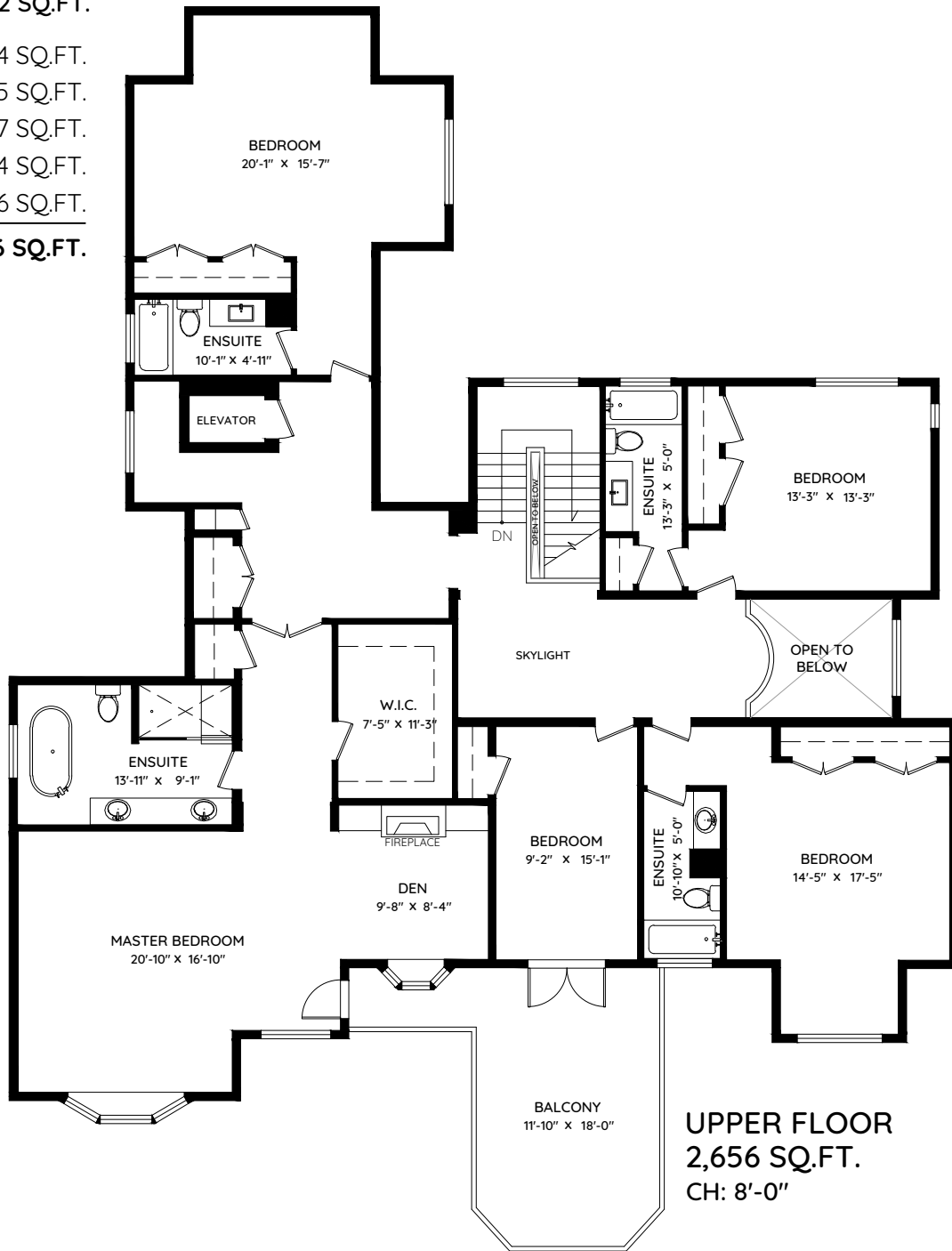
GREEN HOUSE 115 SQ.FT.

STORAGE 77 SQ.FT.

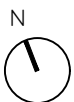
BALCONY 254 SQ.FT.

PATIO 406 SQ.FT.

**TOTAL 1,926 SQ.FT.**



**UPPER FLOOR**  
**2,656 SQ.FT.**  
**CH: 8'-0"**



0 ft 3 ft 5 ft 10 ft

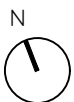
The floor plan and the measurements are approximate within +/- 2% and are to be used for advertising usage only. May include unfinished area. Not suitable for architectural or construction. E&O Insured

# 707 EYREMOUNT DRIVE - LOWER

## WEST VANCOUVER, BC



MAIN	2,895 SQ.FT.	GARAGE	1074 SQ.FT.
UPPER	2,656 SQ.FT.	GREEN HOUSE	115 SQ.FT.
LOWER	2,901 SQ.FT.	STORAGE	77 SQ.FT.
<b>TOTAL</b>	<b>8,452 SQ.FT.</b>	BALCONY	254 SQ.FT.
		PATIO	406 SQ.FT.
		<b>TOTAL</b>	<b>1,926 SQ.FT.</b>



0 ft 3 ft 5 ft 10 ft

The floor plan and the measurements are approximate within +/- 2% and are to be used for advertising usage only. May include unfinished area. Not suitable for architectural or construction. E&O Insured